



SCOTTISHPOWER
RENEWABLES

East Anglia ONE North and East Anglia TWO Offshore Windfarms

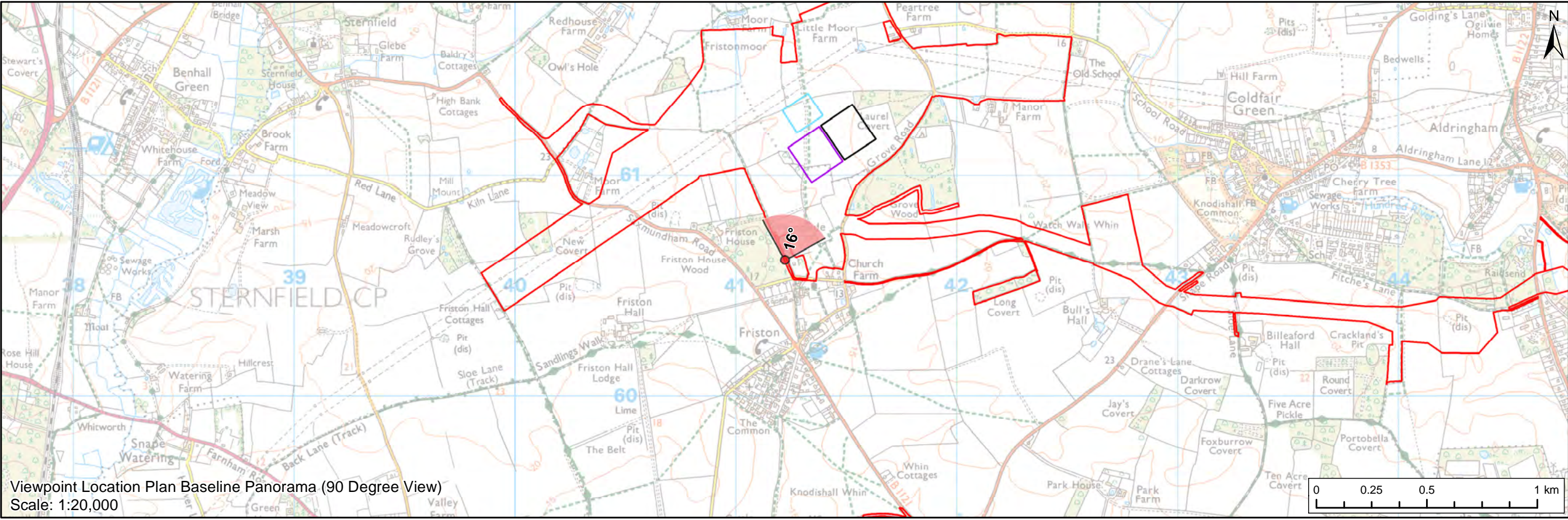
Heritage Assessment GIS Addendum

Appendix 4 CHVP5 – PRow at
Woodside Farm (Appendix 24.7, Figure
10 Update)

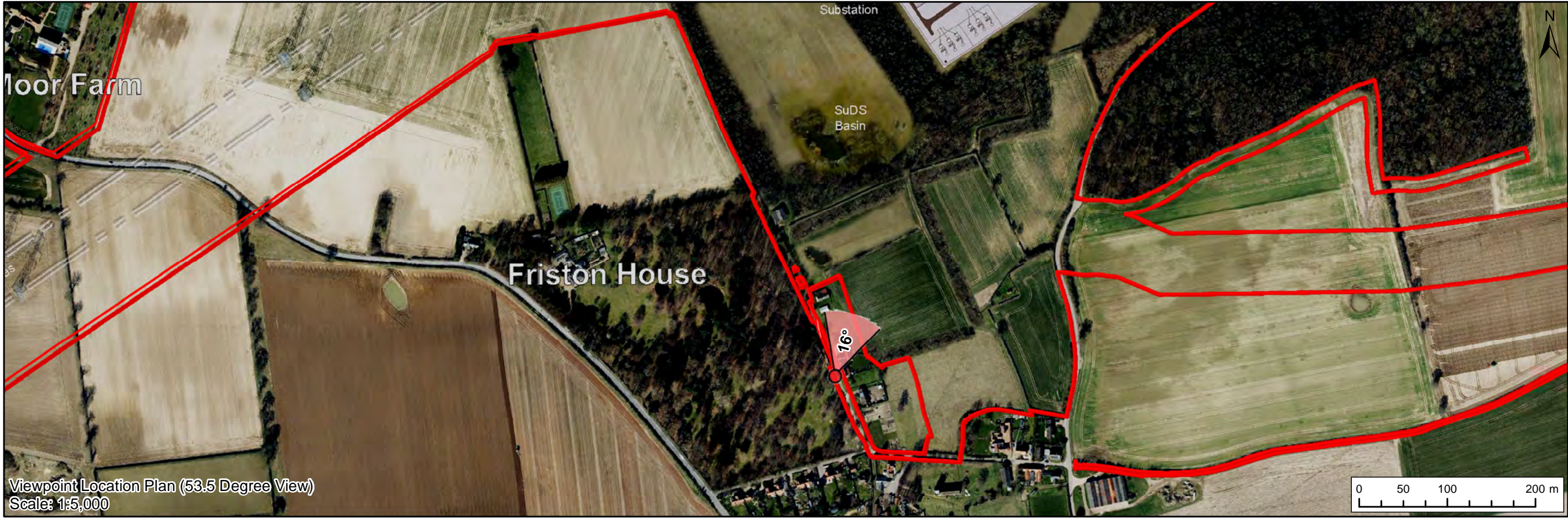
Applicants: East Anglia ONE North Limited and East Anglia TWO Limited
Document Reference: ExA.AS-30.D11.V1_04
SPR Reference: EA1N_EA2-DWF-ENV-REP-IBR-001074_04

Date: 7th June 2021
Revision: Version 1
Author: Royal HaskoningDHV

Applicable to **East Anglia ONE North** and **East Anglia TWO**



Viewpoint Location Plan Baseline Panorama (90 Degree View)
Scale: 1:20,000



Viewpoint Location Plan (53.5 Degree View)
Scale: 1:5,000

Legend

- East Anglia ONE North and East Anglia TWO Onshore Development Area
- Western Substation (190m x 170m)
- Eastern Substation (190m x 170m)
- Indicative National Grid GIS Substation Location

Viewpoint:

- 90 Degree Field of View Viewpoint
- 63.5 Degree Field of View Viewpoint



Baseline Photograph (90 Degree Field of View)



2	07/06/2021	TH	Second Issue (OPEN)	Prepared:	TH
1	13/01/2021	LA	First Issue (OPEN)	Checked:	SM
Rev	Date	By	Comment	Approved:	LT

Scale @ A3

East Anglia ONE North and East Anglia TWO

CHVP5: PROW at Woodside Farm

(Figure 10 - GIS Update)

Rev	D11	Coordinate System: BNG
Date	07/06/21	Datum: OSGB36
Figure	10a	





Visual representation of 1st year of operational phase
Photomontage of the proposed western substation and National Grid GIS substation

View flat at a comfortable arm's length

OS reference:	641221 E 260618 N	Horizontal field of view:	53.5° (planar projection)	Camera:	Canon EOS 5D Mark II
Eye level:	12 m AOD	Principal viewing distance:	812.5 mm	Lens:	50mm (Canon EF 50mm f/1.4)
Direction of view:	16°	Paper size:	841 x 297 mm (half A1)	Camera height:	1.5 m AGL
		Correct printed image size:	820 x 260 mm	Date and time:	28/02/2020, 10:49:54

Contains Ordnance Survey digital data © Crown copyright, All rights reserved 2020 Licence number 0100031673

Figure: 10c
CHVP5: PROW at Woodside Farm



Visual representation of 15th year of operational phase
Photomontage of the proposed western substation and National Grid GIS substation



Visual representation of 1st year of operational phase
Photomontage of the proposed eastern substation and National Grid GIS substation

View flat at a comfortable arm's length

OS reference:	641221 E 260618 N	Horizontal field of view:	53.5° (planar projection)	Camera:	Canon EOS 5D Mark II
Eye level:	12 m AOD	Principal viewing distance:	812.5 mm	Lens:	50mm (Canon EF 50mm f/1.4)
Direction of view:	16°	Paper size:	841 x 297 mm (half A1)	Camera height:	1.5 m AGL
		Correct printed image size:	820 x 260 mm	Date and time:	28/02/2020, 10:49:54

Contains Ordnance Survey digital data © Crown copyright, All rights reserved 2020 Licence number 0100031673

Figure: 10e
CHVP5: PROW at Woodside Farm



Visual representation of 15th year of operational phase
Photomontage of the proposed eastern substation and National Grid GIS substation

View flat at a comfortable arm's length

OS reference:	641221 E 260618 N	Horizontal field of view:	53.5° (planar projection)	Camera:	Canon EOS 5D Mark II
Eye level:	12 m AOD	Principal viewing distance:	812.5 mm	Lens:	50mm (Canon EF 50mm f/1.4)
Direction of view:	16°	Paper size:	841 x 297 mm (half A1)	Camera height:	1.5 m AGL
		Correct printed image size:	820 x 260 mm	Date and time:	28/02/2020, 10:49:54

Contains Ordnance Survey digital data © Crown copyright, All rights reserved 2020 Licence number 0100031673

Figure: 10f
CHVP5: PROW at Woodside Farm



Visual representation of 1st year of operational phase
Photomontage of the proposed western substation, eastern substation and National Grid GIS substation

View flat at a comfortable arm's length

OS reference:	641221 E 260618 N	Horizontal field of view:	53.5° (planar projection)	Camera:	Canon EOS 5D Mark II
Eye level:	12 m AOD	Principal viewing distance:	812.5 mm	Lens:	50mm (Canon EF 50mm f/1.4)
Direction of view:	16°	Paper size:	841 x 297 mm (half A1)	Camera height:	1.5 m AGL
		Correct printed image size:	820 x 260 mm	Date and time:	28/02/2020, 10:49:54

Contains Ordnance Survey digital data © Crown copyright, All rights reserved 2020 Licence number 0100031673

Figure: 10g
CHVP5: PROW at Woodside Farm



Visual representation of 15th year of operational phase
Photomontage of the proposed western substation, eastern substation and National Grid GIS substation

View flat at a comfortable arm's length

OS reference:	641221 E 260618 N	Horizontal field of view:	53.5° (planar projection)	Camera:	Canon EOS 5D Mark II
Eye level:	12 m AOD	Principal viewing distance:	812.5 mm	Lens:	50mm (Canon EF 50mm f/1.4)
Direction of view:	16°	Paper size:	841 x 297 mm (half A1)	Camera height:	1.5 m AGL
		Correct printed image size:	820 x 260 mm	Date and time:	28/02/2020, 10:49:54

Contains Ordnance Survey digital data © Crown copyright, All rights reserved 2020 Licence number 0100031673

Figure: 10h
CHVP5: PROW at Woodside Farm